

# VOR RWY 4

JANESVILLE/SOUTHERN WISCONSIN RGNL (JVL)

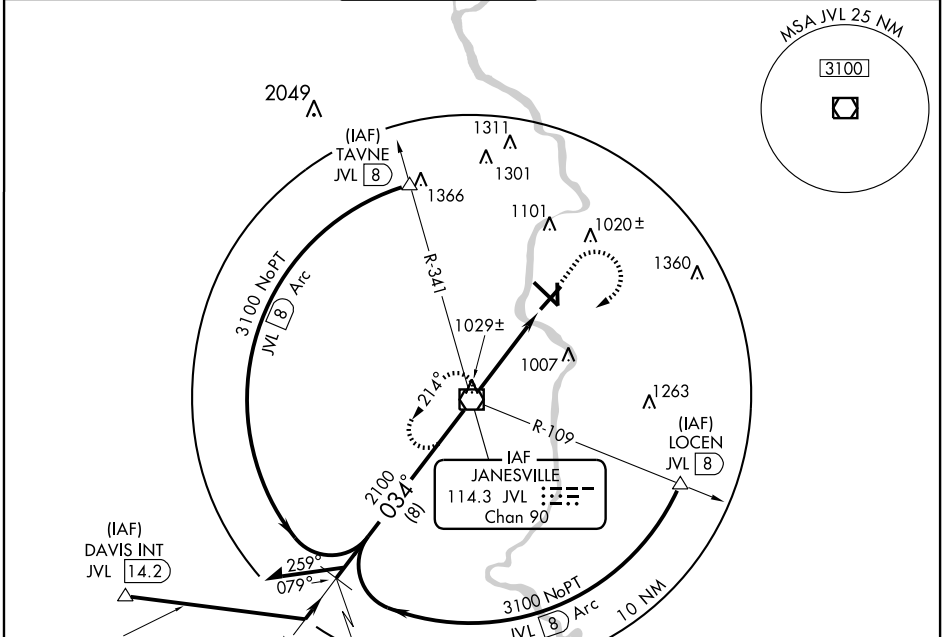
VOR/DME JVL <b>114.3</b> Chan <b>90</b>	APP CRS <b>034°</b>	Rwy Idg TDZE <b>805</b> Apt Elev <b>808</b>	<b>6700</b>
---	------------------------	---	-------------

When control tower closed, obtain local altimeter setting on UNICOM; when not received use Rockford altimeter setting and increase all MDA's 80 feet. For inoperative MALSR, increase S-4 Cat. D visibility 1/2 mile. Circling not authorized at night to Rwy 18.

**MALSR**

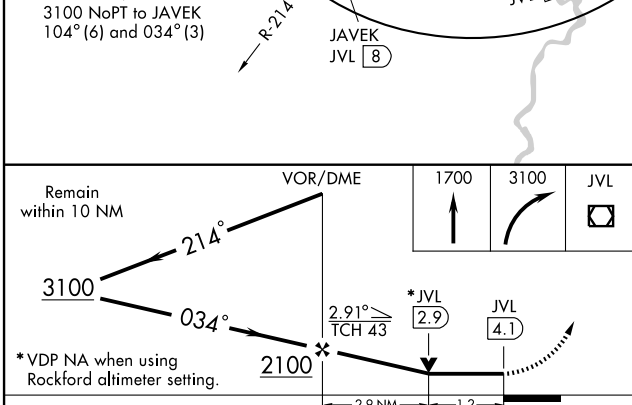
**MISSED APPROACH:** Climb to 1700, then climbing right turn to 3100 direct JVL VOR/DME and hold.

ATIS <b>128.25</b>	ROCKFORD APP CON <b>121.0 327.0</b>	JANESVILLE TOWER ★ <b>118.8 (CTAF) 225.4</b>	GND CON <b>121.65</b>	CLNC DEL <b>121.65</b>	UNICOM <b>122.95</b>
-----------------------	--	---	--------------------------	---------------------------	-------------------------



EC-3, 10 FEB 2011 to 10 MAR 2011

EC-3, 10 FEB 2011 to 10 MAR 2011



**ELEV 808**

HIRL Rws 4-22 and 14-32

MIRL Rwy 18-36

REIL Rwy 14

REIL Rwy 22

844±

TDZE 805

892

863

36

034° 4.1 NM from FAF

FAF to MAP 4.1 NM

Knots	60	90	120	150	180
Min:Sec	4:06	2:44	2:03	1:38	1:22

CATEGORY	A	B	C	D
S-4	1220-1/2 415 (500-1/2)	415 (500-1/2)	1220-3/4 415 (500-3/4)	1220-1 415 (500-1)
CIRCLING	1260-1 452 (500-1)	452 (500-1)	1280-1 1/2 472 (500-1 1/2)	1420-2 612 (700-2)