

WAAS CH <b>40417</b> <b>W22A</b>	APP CRS <b>224°</b>	Rwy Idg TDZE Apt Elev	<b>6700</b> <b>805</b> <b>808</b>
--	------------------------	-----------------------------	---

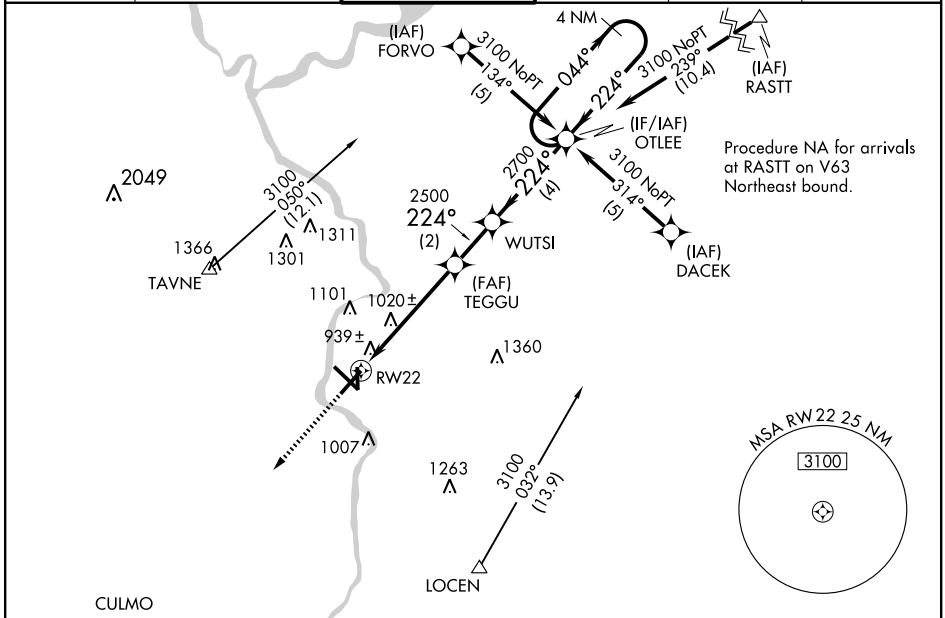
# RNAV (GPS) RWY 22

JANESVILLE/SOUTHERN WISCONSIN RGNL (JVL)

◊ Circling to Rwy 18 NA at night. Baro-VNAV NA when using Rockford altimeter setting. For uncompensated Baro-VNAV systems, LNAV/VNAV NA below -16°C (4°F) or above 47°C (116°F).  
 ▼ DME/DME RNP-0,3 NA. Visibility reduction by helicopters NA. When local altimeter setting not received, use Rockford altimeter setting and increase all DA 69 feet and all MDA 80 feet; increase LPV all Cats visibility, LNAV/VNAV all Cats visibility and Circling Cat D visibility ¼ mile. VDP NA with Rockford altimeter setting.

MISSED APPROACH:  
Climb to 3100 direct CULMO and hold.

ATIS <b>128.25</b>	ROCKFORD APP CON <b>121.0 327.0</b>	JANESVILLE TOWER ★ <b>118.8 (CTAF) 0 225.4</b>	GND CON <b>121.65</b>	CLNC DEL <b>121.65</b>	UNICOM <b>122.95</b>
-----------------------	--	---	--------------------------	---------------------------	-------------------------

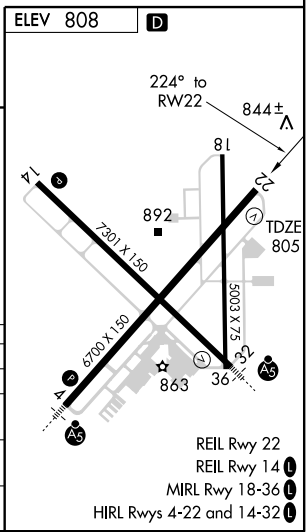


Procedure NA for arrivals at RASTT on V63 Northeast bound.

EC-3, 10 FEB 2011 to 10 MAR 2011

EC-3, 10 FEB 2011 to 10 MAR 2011

3100 ↑ CULMO	4 NM Holding Pattern	TEGGU 2500	WUTSI	OTLEE	3100
* LNAV only RW22	* 1.4 NM to RW22	2500	2700	044°	3100
1.4 NM	3.7 NM	2 NM	4 NM	GS 3.00° TCH 60	
CATEGORY	A	B	C	D	
LPV DA	1120-1		315 (400-1)		
LNAV/VNAV DA	1244-1½		439 (500-1½)		
LNAV MDA	1320-1	515 (600-1)	1320-1½ 515 (600-1½)	1320-1¾ 515 (600-1¾)	
CIRCLING	1320-1	512 (600-1)	1320-1½ 512 (600-1½)	1420-2 612 (700-2)	



REIL Rwy 22  
REIL Rwy 14  
MIRL Rwy 18-36  
HIRL Rwy 4-22 and 14-32