

APP CRS 316°	Rwy Idg TDZE Apt Elev	7301 806 808
------------------------	-----------------------------	---

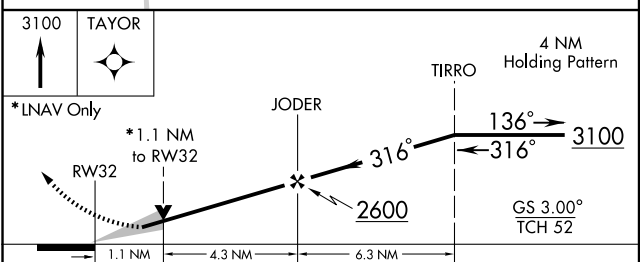
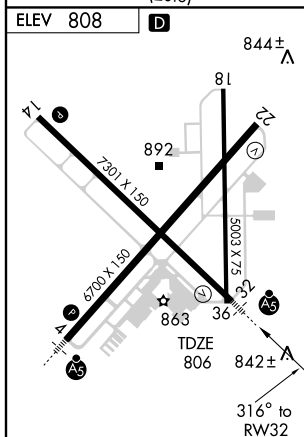
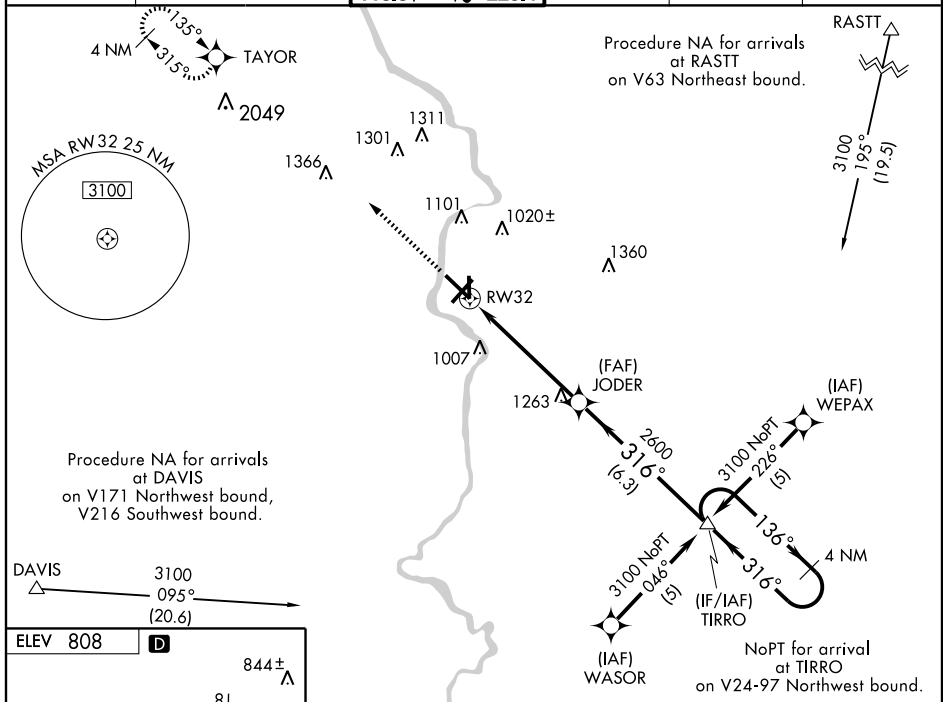
RNAV (GPS) RWY 32

JANESVILLE/SOUTHERN WISCONSIN RGNL (JVL)

NA Baro-VNAV NA below -17° C (3° F). Baro-VNAV and VDP NA with Rockford altimeter setting. DME/DME RNP-0.3 NA. For inoperative MALSR, increase LNAV Cat. A/B/C visibility to 1. When control tower closed, obtain local altimeter setting on UNICOM; when not received use Rockford altimeter setting and increase all DA/MDAs 80 feet. Circling not authorized at night to Rwy 18.

MALSR MISSED APPROACH: Climb to 3100 direct TAYOR WP and hold.

ATIS 128.25	ROCKFORD APP CON 121.0 327.0	JANESVILLE TOWER ★ 118.8(CTAF) 0 225.4	GND CON 121.65	CLNC DEL 121.65	UNICOM 122.95
-----------------------	--	--	--------------------------	---------------------------	-------------------------



CATEGORY	A	B	C	D
GLS PA DA	NA			
LNAV/VNAV DA	1220-1 414 (500-1)			
LNAV MDA	1200-¾ 394 (400-¾)		1200-1 394 (400-1)	
CIRCLING	1260-1 452 (500-1)		1280-1½ 472 (500-1½)	1420-2 612 (700-2)

REIL Rwy 22

REIL Rwy 14

MIRL Rwy 18-36

HIRL Rwy 4-22 and 14-32

EC-3, 10 FEB 2011 to 10 MAR 2011

EC-3, 10 FEB 2011 to 10 MAR 2011