

WAAS CH <b>82617</b> <b>W04A</b>	APP CRS <b>043°</b>	Rwy Idg TDZE <b>806</b> Apt Elev <b>808</b>	<b>6700</b>
--	------------------------	---	-------------

# RNAV (GPS) RWY 4

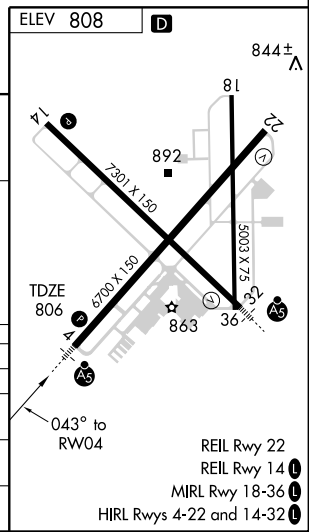
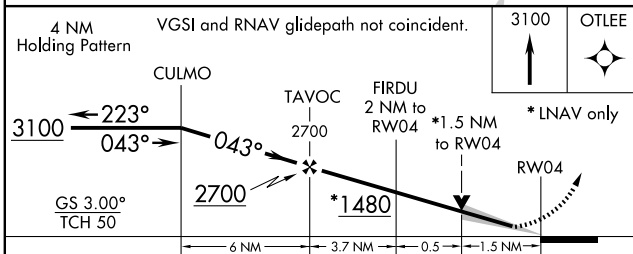
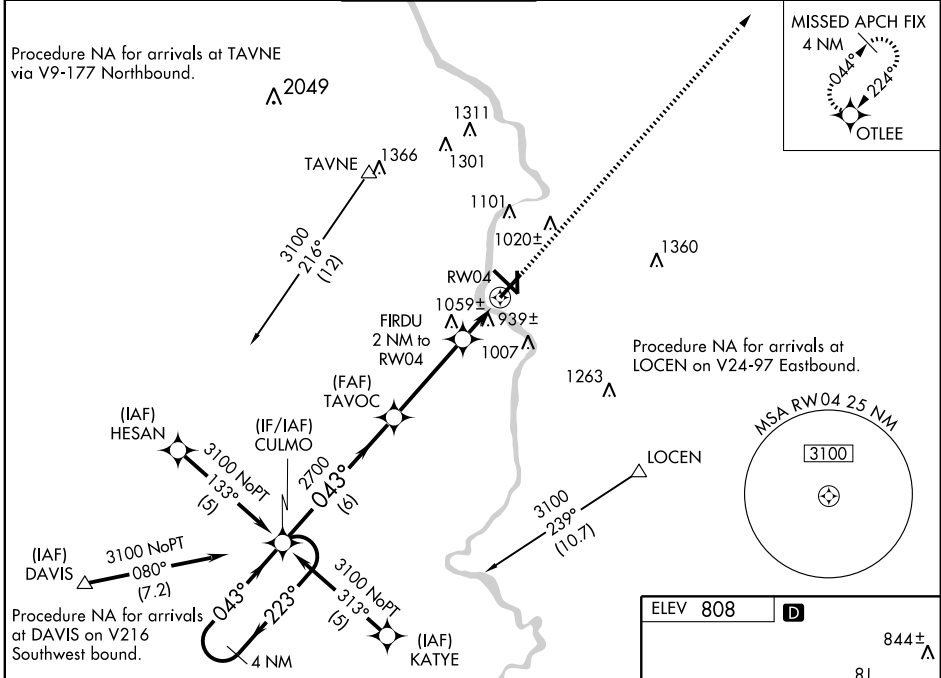
JANESVILLE/SOUTHERN WISCONSIN RGNL (JVL)

▼ Circling to Rwy 18 NA at night. Baro-VNAV NA when using Rockford altimeter setting. For uncompensated Baro-VNAV systems, LNAV/VNAV NA below -1.6°C (4°F) or above 47°C (116°F). DME/DME RNP-0.3 NA. VDP NA with Rockford altimeter setting. When local altimeter setting not received, use Rockford altimeter setting and increase all DA 69 feet and all MDA 80 feet; increase LNAV/VNAV all Cats visibility 1/4 mile and Circling Cat D visibility 1/4 mile. For operative MALSR, when using Rockford altimeter setting increase LPV all Cats visibility to 1 mile.

**MALSR**

**MISSED APPROACH:**  
Climb to 3100 direct  
OTLEE and hold.

ATIS <b>128.25</b>	ROCKFORD APP CON <b>121.0 327.0</b>	JANESVILLE TOWER ★ <b>118.8 (CTAF) 0 225.4</b>	GND CON <b>121.65</b>	CLNC DEL <b>121.65</b>	UNICOM <b>122.95</b>
-----------------------	--	---	--------------------------	---------------------------	-------------------------



CATEGORY	A	B	C	D
LPV DA		1006-1/2	200 (200-1/2)	
LNAV/VNAV DA		1245-1	439 (500-1)	
LNAV MDA	1320-1/2 514 (600-1/2)		1320-1 514 (600-1)	1320-1 1/4 514 (600-1 1/4)
CIRCLING	1320-1 512 (600-1)		1320-1 1/2 512 (600-1 1/2)	1420-2 612 (700-2)

EC-3, 10 FEB 2011 to 10 MAR 2011

EC-3, 10 FEB 2011 to 10 MAR 2011