


LOC I-JVL 109.1	APP CRS 044°	Rwy ldg 6700 TDZE 806 Apt Elev 808
---------------------------	------------------------	---

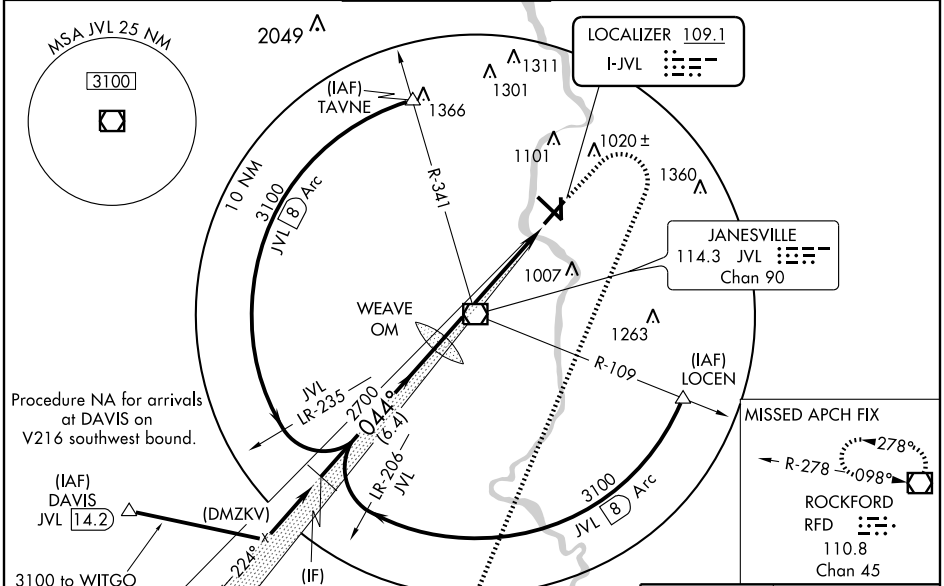
ILS or LOC RWY 4

JANESVILLE/SOUTHERN WISCONSIN RGNL (JVL)

⚠ Circling to Rwy 18 NA at night. When local altimeter setting not received, use Rockford altimeter setting and increase all DA 69 feet and all MDA 80 feet, increase S-LOC 4 Cats C/D and Circling Cat C visibility ½ mile, and Circling Cat D ¼ mile. For inoperative MALSAR when using Rockford altimeter setting increase S-ILS 4 all Cats visibility to 1 mile.

MALSAR
 MISSED APPROACH: Climb to 1700 then climbing right turn to 3100 direct RFD VOR/DME and hold.

ATIS 128.25	ROCKFORD APP CON 121.0 327.0	JANESVILLE TOWER ★ 118.8(CTAF) 225.4	GND CON 121.65	CLNC DEL 121.65	UNICOM 122.95
-----------------------	--	--	--------------------------	---------------------------	-------------------------



VGSI and ILS glidepath not coincident.

1700	3100	RFD
------	------	-----

WITGO JVL [B] WEAVE OM

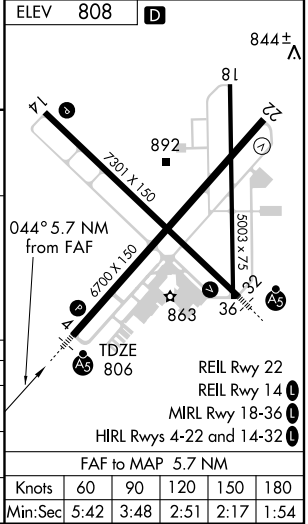
3100 044° 2686

Procedure Turn NA

GS 3.00° TCH 50

2700

6.4 NM 5.7 NM



CATEGORY	A	B	C	D
S-ILS 4	1006-½		200 (200-½)	
S-LOC 4	1400-½	594 (600-½)	1400-1 594 (600-1)	1400-1¼ 594 (600-1¼)
CIRCLING	1400-1	592 (600-1)	1400-1½ 592 (600-1½)	1420-2 612 (700-2)

ILS or LOC RWY 4

EC-3, 10 FEB 2011 to 10 MAR 2011

EC-3, 10 FEB 2011 to 10 MAR 2011